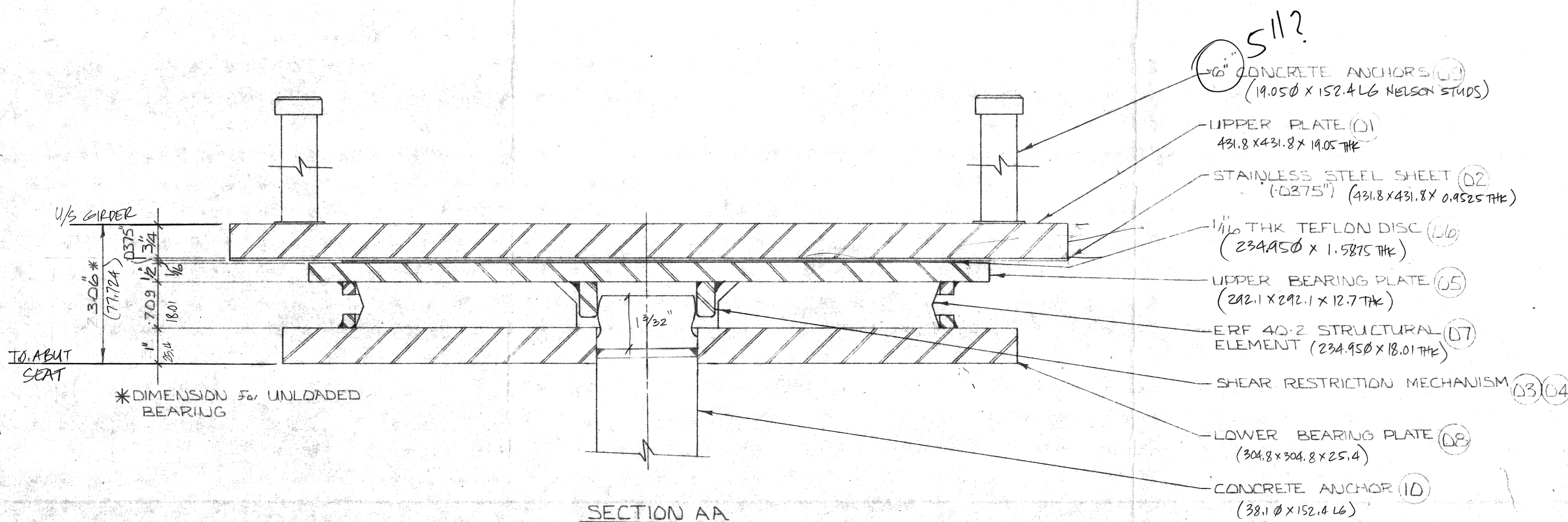


HALF SECTION AT CENTRE  
EXPOSING ERF 402 ELEMENT  
& LOWER BEARING PLATE

GENERAL NOTES

- 1-ALL STEEL FOR BEARING ASSEMBLIES SHALL BE CSA STD G40-20 GRADE 44W
- 2-ALL STEEL TO BE PAINTED ONE SHOP COAT OF PRIMER.
- 3-ALL WELDING TO CONFORM TO CSA STD W59-1
- 4-STAINLESS STEEL TO BE TYPE 304 BRIGHT ANNEALED.

REID, CROWTHER & PARTNERS LIMITED  
**REVIEWED ONLY**  
MATERIAL MUST MEET REQUIREMENTS OF SPECIFICATIONS AND DRAWINGS. APPROVAL OF DIMENSIONS AND OTHER GENERAL CONSTRUCTION FEATURES NOT IMPLIED.  
CORRECTIONS ARE REQUIRED WHERE NOTED IN RED  
Project \_\_\_\_\_  
Proj. No. 3477 A Sig. \_\_\_\_\_ Date JAN 28 1976



WABD-FYFE 75 TON MULTIDIRECTIONAL BEARING  
For NORTH & SOUTH ABUT - 28 COMPLETE UNITS REQ'D

TYPE 'A'

<p>— NOTE — INFORMATION AND KNOWHOW ON THIS DRAWING IS THE PROPERTY OF ELASTOMETAL LIMITED USE OR REPRODUCTIONS OF THIS DRAWING IS PROHIBITED WITHOUT WRITTEN PERMISSION</p>	DWG. NO.: E-669
	PROJECT: OSBORNE ST. BRIDGE
	<b>ELASTOMETAL LIMITED</b>
	DRAWN BY: EVAN TAYLOR PROJECT #62-71 DATE: JAN 20 76 CHECKED BY: SHEET 1 OF 3 SCALE: N.T.S.

WABD-FYFE MULTIDIRECTIONAL 75 TON BRG